

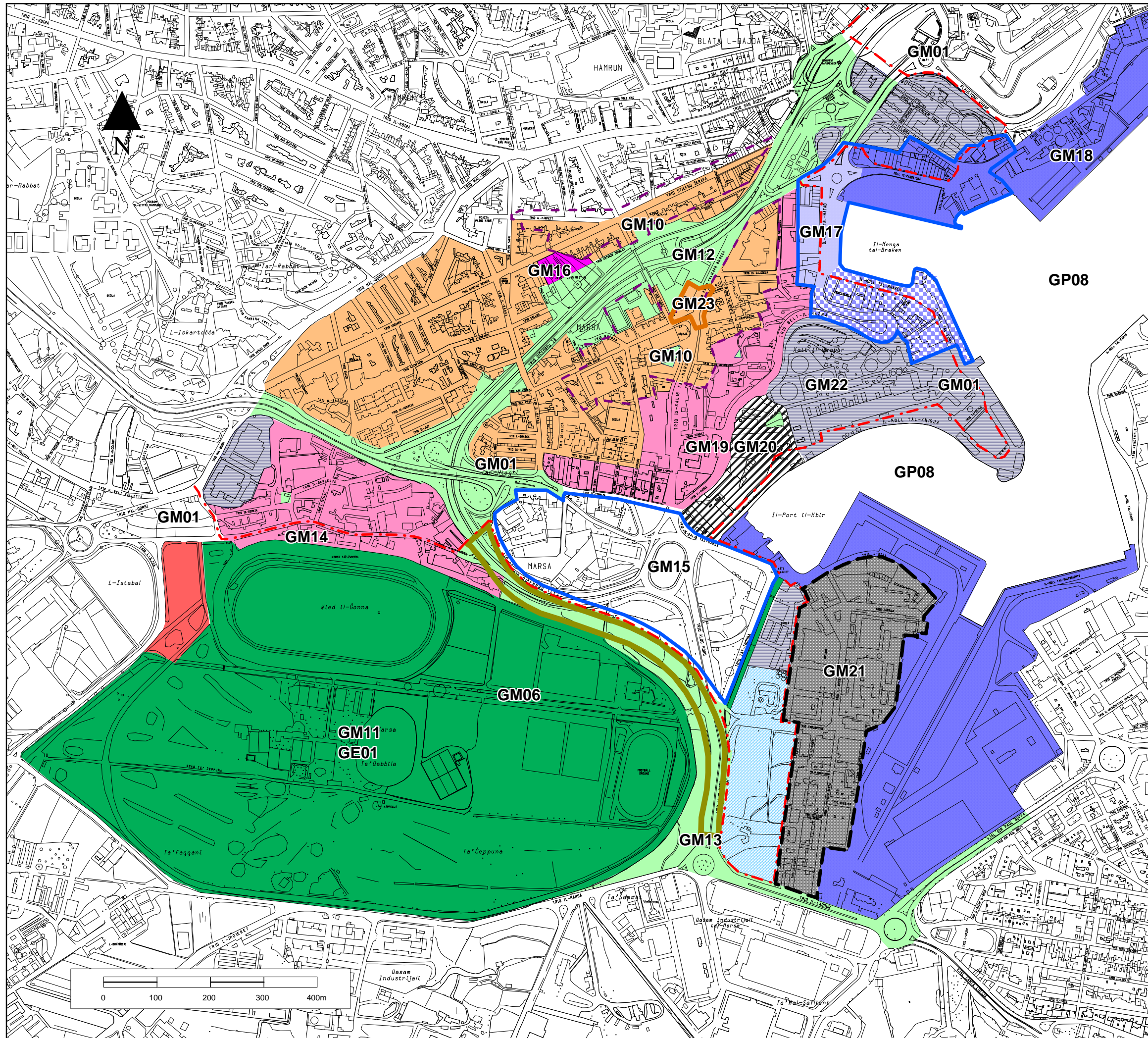
GRAND HARBOUR LOCAL PLAN



AWTORITA TA' L-IPPJANAR
PLANNING AUTHORITY

Key

- Urban Development Boundary
- Urban Conservation Area
- Opportunity Area
- Tertiary Town Centre
- Industrial Zone Boundary
- Light Industry
- Zone of Mixed Use
Excluding Use Classes 12 to 16
(Use Classes Order, 1994 as amended)
- Public Facilities
- Retention of Existing or more
Environmentally Friendly Uses
- Port Related Uses
- Light Port Related Uses
Excluding Use Classes 12 to 16
(Use Classes Order, 1994 as amended)
- Residential Zone
- Transport Infrastructure Upgrading
- Site for Home for the Elderly
- Areas of Open Space
(to retain open space character)
- Site of Scientific Importance
- Offices and Showrooms
(All existing parking provisions to be catered for)
- General industry with neighbour
compatibility



Marsa Inset Map

Scale : **1:7000** Date : **April 2002** Figure : **12**
 INDICATIVE ONLY
 Not to be used for direct interpretation.
 Base Maps - 1988 Survey Sheets
 Copyright Mapping Unit, Planning Authority

