

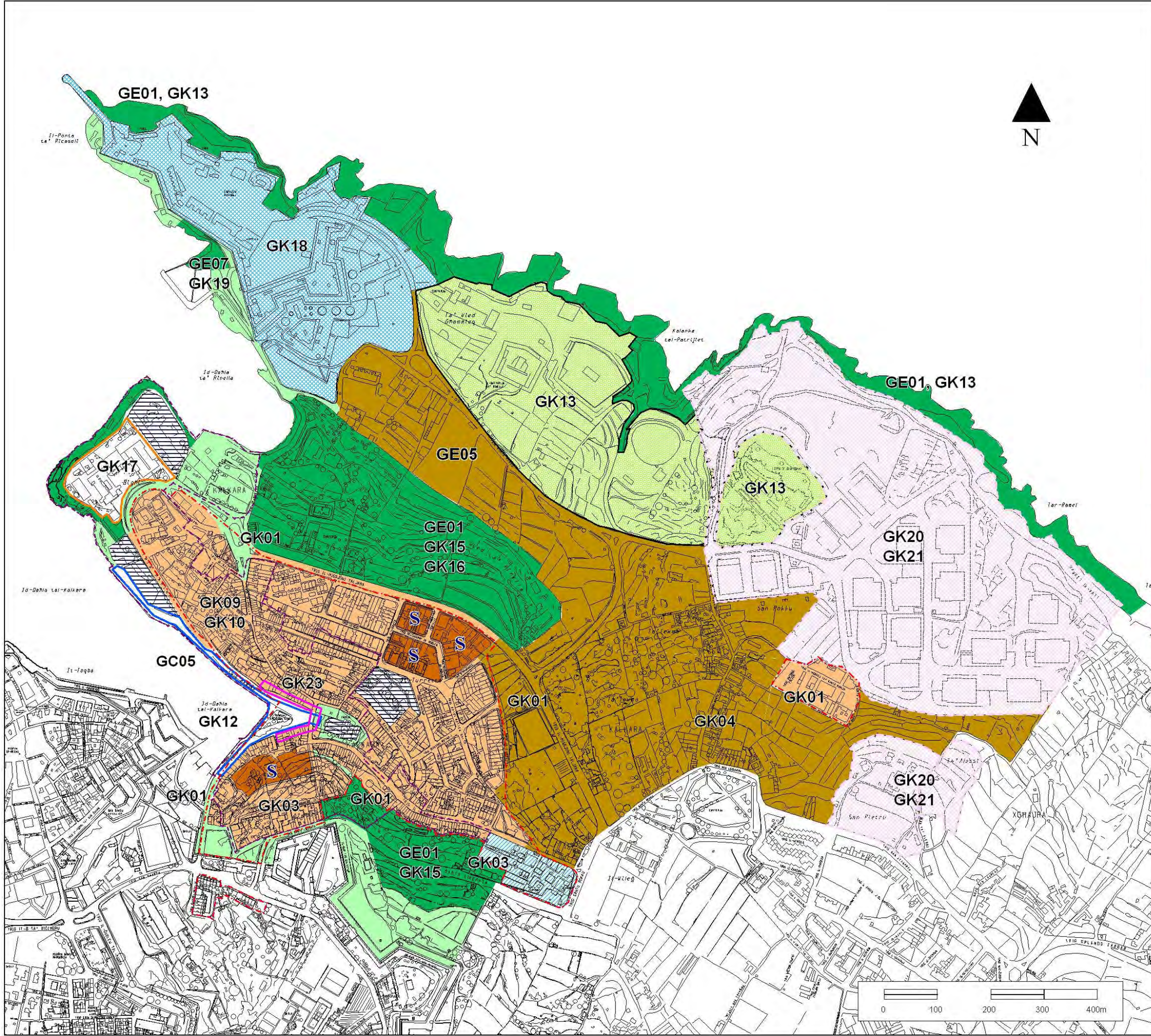
GRAND HARBOUR LOCAL PLAN
REVIEW



L-Awtorita' ta' Malta Dwar l-Ambjent u l-Ippjanar
Malta Environment & Planning Authority

Key

-  Development Brief
-  Retention of Existing or more Environmentally Friendly Uses
-  Urban Development Boundary
-  Residential Zone
-  Urban Conservation Area
-  Semi Detached Development
-  Business Park Boundary
-  Areas of Open Space (to retain open space character)
-  Rural Conservation Area
-  Site of Scientific Importance / Area of Ecological/Geological Importance
-  Rinella Recreational Area
-  Neighbourhood Centre
-  Opportunity Area
-  Reuse of Bighi Naval Hospital
-  Reserved for Religious Development Use



Kalkara
Inset Map

Scale : **1:7000** Date : **September 2006** Figure : **23**
INDICATIVE ONLY
Not to be used for direct interpretation.